

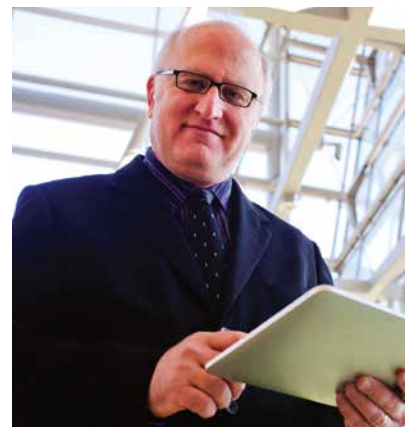


CaseLink Web

Introducing CaseLink Web

Anytime, Anywhere Access via The Cloud

- Intuitive, Web-based User Interface
- Customization for the way you work
- 341(a) Meetings Simplified
- Multi-user Collaboration
- Enhanced Imports & Automation
- Robust Management of Deposits and Payments
- Easy Access to Common Tasks





CaseLink Web

Our flagship software...

Redesigned for access through the Internet

CaseLink has been the leading case administration solution for Chapter 7 for over 25 years. With direct feedback from our clients – Trustees and their staff who are hands-on with the software on a daily basis, CaseLink has evolved to meet the changing needs of Chapter 7 professionals, and has made their practices more efficient.

CaseLink Web represents a whole new generation of case management, giving you the freedom to work anytime and anywhere you have an Internet connection – your home, office or any remote location. CaseLink Web is cloud-based and utilizes the latest technology, to allow access from any computer, laptop or tablet.

Built from the ground up, CaseLink Web follows a user-centric approach so everything is designed to make the tasks you perform easier and more intuitive.

Come experience the best in case administration technology. Contact us to set up a demo of CaseLink Web and let us show you how easy it is to use.



Anytime, Anywhere Access

Office, Home, at the Courthouse or on-the-go, CaseLink Web is available wherever you have Internet access. You now have up-to-the-second access to case information, banking data, and communications via the Cloud.

Routine Tasks Automated

ECF Documents, Cases, Assets, DocLink Documents...all imported into CaseLink Web automatically no need to fetch or schedule such tasks. Banking information just comes in as the bank posts the information for your accounts. Real Time. Real Automation.

Advanced Case Search

New assisted search provides suggested searches as you type, similar to popular search engines. Plus, you can perform searches from any screen!

Key Product Features



341(a) Meetings Made Easy

Our handy 341(a) Meeting Prep view allows you to filter for cases by meeting date or date range, expand a record to enter details for the 341(a) report. Our intuitive wizards allow you to customize your Prep Sheet and calendar to meet your specific needs. During your 341(a) meeting, a simple click allows you to see all details and jump from one case to another quickly. The offline export feature is available for those times if you don't have Internet access at your 341(a) meeting location.

Customization for the way you work

Everyone uses case administration software differently. Some may focus on case status by dates while others are deep into reviewing assets. As such, you have the ability to customize several components including the Case Screen, 341(a) Prep Sheet, UST Form Collation as well as the handling of assets upon import.

The Most Robust Accounts Receivable Module

Stay on top of upcoming Account Receivable (AR) payments by tracking current and past due payments for the past 30, 60, or 90 days. ARs are easier to track with the distribution of new deposits along with the creation of invoices and payment coupons. Flexible payment schedules allow you to add account service fees, lock in down payments or interest, as well as include balloon payments and modify payment schedules as needed in the future.

Banking Details - All in One Screen

We've pulled all of the various banking functions into one new banking ledger screen - reducing the time it takes for users to enter or review data. Our new screen looks more like your personal online banking accounts - including images of cleared checks. Side-by-side views help make bank reconciliation easy. Plus, since CaseLink Web is in the Cloud, all banking data is always synced - no delays, with balances automatically updated routinely.

Custom Queries allow for Highly Targeted Searches

Performing customized searches to find data or cases meeting specific criteria used to be quite a daunting task...but that's no longer the case when using our new Custom Queries function. Use one of our preset queries or create your own custom one using simple, plain English. Criteria can then be added or deleted to enhance your search capabilities. Save your custom query for use again in the future.

Auditor Preparation Just Got Easier

Preparing for an audit does not need to be stressful anymore thanks to our new Auditor tool. A variety of search options are now available to find potential issues to resolve in advance of your next audit. Cases or data issues that need further inspection can be saved to the sidebar to create a task list. In addition, you can create and update the ICQ document electronically and always keep the latest on file in CaseLink Web.



The Most Advanced, Dynamic Solution in the Cloud

Behind the Interface

Security

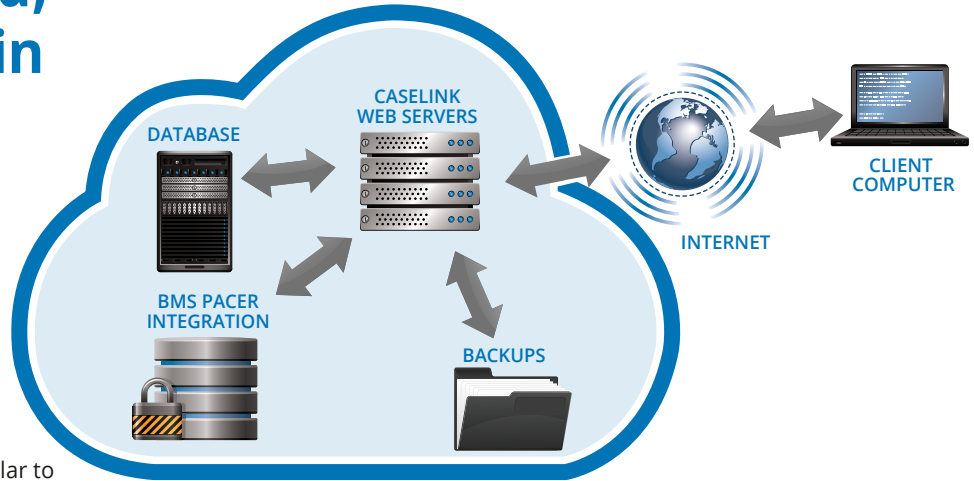
CaseLink Web utilizes industry-standard SSL encryption to make sure that the connection between your computer and the BMS servers are secure.

BMS servers that hold your data are in an enterprise-grade, SAS70 Type II-compliant facility, similar to those used by major financial institutions.

Furthermore, CaseLink Web is protected by McAfee to guard against known vulnerabilities.

Daily Data Backups

Your data in CaseLink Web is backed-up on a daily basis to a secure location. In the unlikely event of a catastrophic system failure, BMS will have all systems and data restored within 2 business days.



Reliability

CaseLink Web is hosted on multiple servers which provide unparalleled redundancy. This means that you can keep working no matter what happens.

Documents and Personally Identifiable Information (PII)

All documents containing sensitive information from the court are automatically downloaded to the BMS servers and stored in an encrypted format providing the highest level of security.

Easy and Seamless Migration

BMS has designed a streamlined approach to migrating your case data from your current system to CaseLink Web.

We plan for such transitions every day so we know exactly what to watch out for to make your migration move smoothly. In fact, once we've planned out your migration, you can rest assured that you'll be trained on CaseLink Web properly and be up and running with minimal downtime - often just 1 day!



What Our Clients are Saying

“CaseLink Web is a completely new system that I can access anywhere. Because I have a large caseload, I love being able to customize the questions for my 341(a) meetings beforehand, bring up the actual case records during the meetings, and quickly enter in the responses as I'm asking questions. Even before I get back to the office, all the data is available for my assistant to get started on the next steps - it's the only way we can keep up with all of our cases in a timely manner.”

- Dotan Melech
Chapter 7 Trustee
Las Vegas, NV

“Being web-based, CaseLink Web enables me to seamlessly work from home, the office, the meeting room, or anywhere else with an Internet connection. My assistant also loves the flexibility to work from home. With the ability to access the system from both my iPad® and laptop, Caselink Web allows me to keep my finger on the pulse of all my cases all the time!”

- Leonard J. Ackerman
Chapter 7 Trustee
San Diego, CA

CaseLink Web vs. CaseLink Office

| Key Features | CaseLink Office | CaseLink Web |
|--|-----------------|--------------|
| Automation and Productivity | | |
| Case Import Automation | | ✓ |
| Adversary Cases Import Automation | ✓ | ✓ |
| Asset Import Automation | | ✓ |
| Matching Amendments to Assets | ✓ | ✓ |
| Matching Leins and Exemptions | ✓ | ✓ |
| POC Link Available on the Claim | | ✓ |
| Document Import Automation | | ✓ |
| SSN Import Automation from BNC | ✓ | ✓ |
| Multi-State Wage Claims | ✓ | |
| Time Entry Tool | ✓ | |
| Customization | | |
| Customizable Case Page | | ✓ |
| Ability to Customize Case Search Listings | | ✓ |
| Customized Handling of Amended Claims | | ✓ |
| Search | | |
| Intuitive Case Search | | ✓ |
| Customized Queries | ✓ | ✓ |
| 1-Click Filter for Petitions and Schedules | ✓ | ✓ |
| 341(a) Meetings - Prep and Workflow | | |
| Easy-to-Use 341(a) Prep Workflow | ✓ | ✓ |
| Custom 341(a) Prep Sheets via Wizard | | ✓ |
| Custom 341(a) Calendars via Wizard | | ✓ |
| Accounts Receivables | | |
| Easily Create AR Linked to Asset(s) | ✓ | ✓ |
| Intuitive Payment Schedule Creator | ✓ | ✓ |
| AR Aging Report to Track Past Due Payments | ✓ | ✓ |
| Banking | | |
| 1-Step Matching Check to Payee or Claim | ✓ | ✓ |
| Ability to Print Bank Confirmations | | ✓ |
| Electronic Bank Statements | ✓ | ✓ |
| Interim Bank Statements | ✓ | ✓ |
| Batch Printing of Checks and Deposits | ✓ | ✓ |
| Audit Preparation | | |
| Auditor Tracking Tools | ✓ | ✓ |
| Auditor Reminders | ✓ | ✓ |
| Auditor Reports | ✓ | ✓ |
| Track Case Activity by User | | ✓ |
| UST Reports | | |
| UST Forms Wizard | ✓ | ✓ |
| Ability to Print a Draft Form 1 | ✓ | ✓ |

Training & Support Resources

Online, over the phone, or via WebEx®, we've got you covered. CaseLink Web is incredibly intuitive.

Whether you are a seasoned trustee or newly appointed to a panel, BMS has developed comprehensive training materials so that you can start taking advantage of all the time-saving features in CaseLink Web quickly and easily.

Training & Support Options include:

- Online Training Video Library
- Live Classes via WebEx
- Help file within CaseLink Web
- BMS Support Center
- Your BMS Account Manager

“CaseLink Web has enabled me to become a truly paperless and more efficient Chapter 7 Trustee. I can now access my cases, reports and documents from any computer, including my iPad®, while I am conducting 341(a) meetings; I am no longer shackled to one computer at one location. CaseLink Web has eliminated the need to carry boxes of case files; I now carry access to all my cases through my cellular- or wifi-connected tablet computer. The user interface is intuitive combining both simple graphical icons and text based menu options. I would highly recommend CaseLink Web to any Trustee seeking to streamline his/her practice.”

- Josh Menard
Chapter 7 Trustee
Concord, NH

To learn more or to set up a demo, please contact:



8 Corporate Park, Ste. 230, Irvine, CA 92606
T: 800-634-7734 | BMSadvantage.com